

## SOP-E015

### CyClone on the XDP MoFlo Sorter

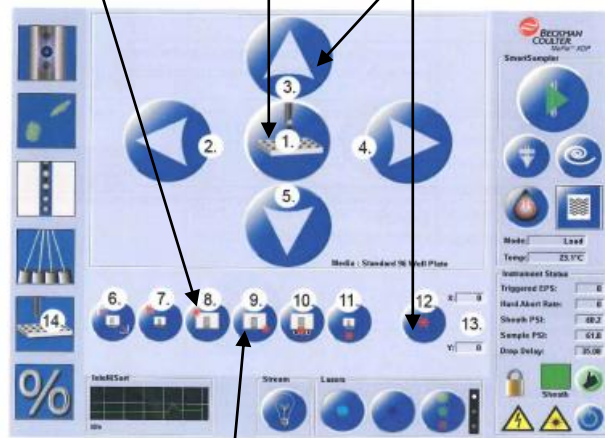
**Objective:** To prepare the CyClone on the XDP MoFlo Sorter for a 96 well plate sort.

When you intend to use the CyClone to sort on to a slide or a plate, **you must first acquire data from the same, set regions and gates, set sort decisions, configure the slide or plate in Summit software, and configure the CyClone before sorting.**

#### **Procedure:**

1. First you will need to check the alignment of the 96 well plate to be sure the sort is centered in the center of the wells.
2. Press the Home Button. (This should be well A1 on the 96 well plate). The CyClone will move to the last set position. If you want to change the Home position, use the Arrow Buttons to move the CyClone to the desired location. Press the Set Button to store the new position.
3. To test the new position, press the Squirt button and observe if the fluid is deposited in the desired location. If this is the right location, press the Set Button. (If you do not press the set button, the position will be lost.)

Figure 4.9 CyCLONE Configuration Screen

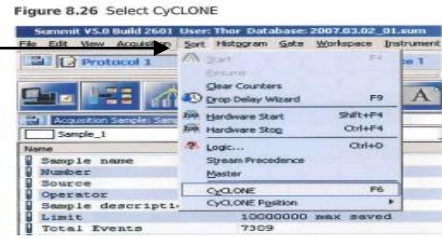


- |                          |                                  |
|--------------------------|----------------------------------|
| 1. Squirt Fluid          | 8. Home                          |
| 2. Moves CyCLONE left    | 9. End                           |
| 3. Moves CyCLONE back    | 10. Tubes                        |
| 4. Moves CyCLONE right   | 11. Load                         |
| 5. Moves CyCLONE forward | 12. Set                          |
| 6. Find Extents          | 13. Numerical Position           |
| 7. Park                  | 14. CyCLONE Configuration Screen |

4. Click the End Button. Then repeat Step #3.

**You must set the decisions for stream Right 2 (R2) ONLY and the Voltage around 2800**

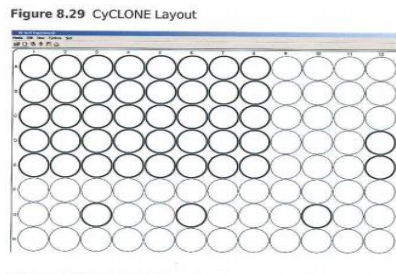
1. From the main **Sort** menu in the Summit software, select CyClone and click **Media** and select **New**.
2. A dialog box appears. Select the appropriate Medium from the list.



Name	Type	Rows	Columns
New 96 Well Plate	Tray	5	10
New 96 Well Plate	Tray	10	10
New 6 Well Plate	Tray	2	3
Slide matrix	Slide	10	10
Standard 1536 Well Plate	Tray	32	48
Standard 24 Well Plate	Tray	4	6
Standard 384 Well Plate	Tray	16	24
Standard 96 Well Plate	Tray	8	12
Standard Slide	Slide	10	1

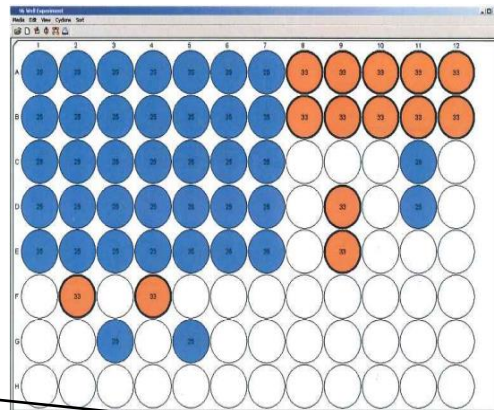


3. A layout of the chosen medium appears. Click on all of the circles that will receive one of your sort decisions. To Select individual circles, press the CTRL key while you click the circle. To select a group of circles, click one circle, press the SHIFT key while you click another circle. To clear a selected circle, click it again.



Right-click in a selected circle and choose **Define**.

Figure 8.30 CyCLONE Define Layout



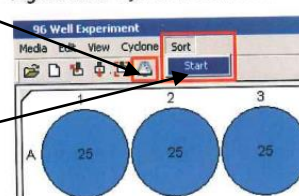
4. Once your CyClone layout has been chosen, Right-click in a selected circle and choose **Define**. Set a limit for the maximum number of cells that will be sorted in one location.

5. If you intend to sort more than one set of sort decisions, repeat steps 1-4. Then select a different color for the set. Then click okay.

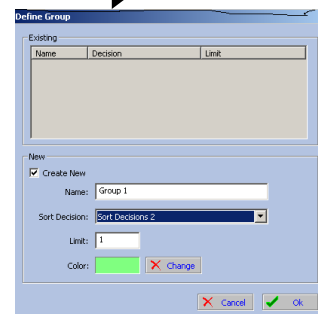
6. Each time you make a change, that becomes a new decision.

7. To begin sorting, click the **Sort Icon**

Figure 8.35 CyCLONE Start Sort



Or click **Start**.



**Pause Sorting:**

1. During a sort run, you may want to pause data acquisition but continue to run the sample so you can continue to view events on the aXcess Control Panel, and then resume data acquisition later.
  - a) To pause a sort in this manner, go to the main **Sort** menu in Summit software and select **Pause**.
  - b) To resume sorting and acquiring data in Summit software, go to the main **Sort** menu and select **Resume**.
2. If you are using a plate or slide, the sorter will resume sorting at the same position that the CyClone was in when you paused the sort.

**Reminder: You must set the decisions for stream Right 2 (R2) ONLY and the**

-----  
**Created by:** Cheryl Holdman

**Verified by:** \_\_\_\_\_ **Date:** 8/19/2013

Print Name

Sign Name